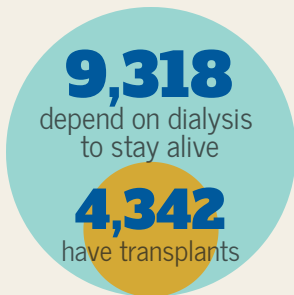


# Kidney failure (ESRD) in Missouri

# 2021

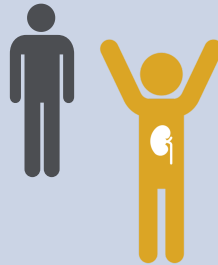
**13,660**  
**Missouri residents**

are living with end-stage renal disease (ESRD, or kidney failure). Without treatment—dialysis or a transplant—ESRD is fatal.



SOURCE: U.S. Renal Data System 2020 Annual Data Report

Only about 1 in 2 Missourians on the waiting list got a kidney transplant in 2020.



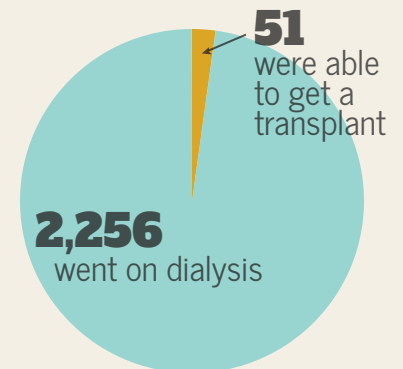
**1,432** are on the waiting list for a kidney transplant  
**593** kidney transplants were performed in Missouri in 2020

SOURCE: Organ Procurement and Transplantation Network

**2,307**

**New cases of kidney failure**

were diagnosed in Missouri in 2018 (the most recent data available).



SOURCE: U.S. Renal Data System 2020 Annual Data Report

## Missourians are at risk for kidney disease

**Leading causes  
of kidney failure**



Diabetes

High blood  
pressure

**MO  
AT  
RISK:**

10.3%

diagnosed with diabetes

30.9%

have high blood  
pressure

34.8%

self-report obese

SOURCE: Centers for  
Disease Control  
and Prevention  
Behavioral Risk Factor  
Surveillance System

## Why ESRD patients depend on charitable assistance

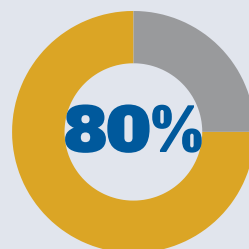
**1,577** Missouri residents

on dialysis and with transplants received grants from AKF in 2020 to pay for their insurance premiums, emergency pandemic-related costs and other health care-related costs not covered by insurance.

**\$4.9** million

in charitable assistance from AKF ensured that low-income Missouri dialysis and transplant patients could afford their lifesaving health care.

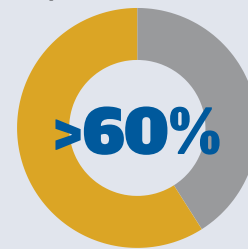
Most dialysis patients  
too sick to work



ESRD IS A DISABILITY

Dialysis is life support. Treating kidney failure and its comorbidities is more consuming than a full-time job: more than 80% of patients cannot work

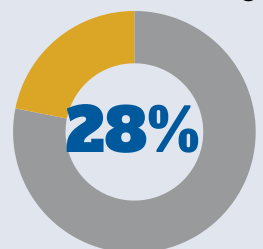
Most patients AKF  
helps are minorities



MINORITIES ARE MORE  
AFFECTED BY ESRD

Of the patients AKF helps,  
34.7% are Black  
20.9% Hispanic/Latino  
5.2% Native American/ Asian/  
Pacific Islander

Ratio of out-of-pocket  
to income is stunning



FINANCIAL HARDSHIP  
COMES WITH ESRD

Average income of patients  
AKF helps is < \$25,000, yet  
average out-of-pocket costs for  
dialysis patients is  
>\$10,000/yr

9th leading cause of death in the U.S.

# The facts about kidney disease

Kidneys are vital organs—just like the heart, lungs and liver. They clean the blood, help control blood pressure, help make red blood cells, and keep bones healthy.

- Chronic kidney disease is an increasingly common but usually preventable condition. **More than 37 million Americans have kidney disease** and millions more are at risk.
- According to the CDC, 9 out of 10 people with early kidney disease don't know they have it because it **usually has no symptoms until the late stages**. Simple blood and urine tests can tell how well the kidneys are working.
- Diabetes and high blood pressure are the **two leading causes of kidney disease**. Kidney disease can lead to heart attack, stroke, kidney failure and death.
- Kidney disease can be treated. If it's caught and treated early, it's often **possible to slow or stop the progress of kidney disease**.
- Besides diabetes and high blood pressure, other **common risks** for kidney disease include:
  - Having a **family history of kidney disease**
  - Being **Black, Hispanic, Asian American or Native American**
  - Being **over 60**
- Black Americans are **3.4 times more likely than whites** to develop kidney failure, and Hispanics are **1.5 times more likely than non-Hispanics** to develop kidney failure.

Kidney disease is  
a silent killer



- There are more than **785,000 people with kidney failure** in the United States—an **increase of more than 100% since 2000**.
  - About 555,000 are on dialysis and nearly 230,000 are living with kidney transplants.
  - Each month, **almost 11,000 new cases of kidney failure** are diagnosed.
- In 2018, Medicare spending for ESRD beneficiaries was **\$49.2 billion—7.2% of Medicare costs**—though **ESRD patients make up less than 1%** of the total Medicare population.
- A patient on hemodialysis costs Medicare **more than \$93,000 per year**.
- For each kidney disease patient who does not reach kidney failure, **Medicare saves an estimated \$250,000**.
- **One third** of people who were diagnosed with kidney failure in 2018 received **little or no pre-ESRD care**.

Costly to patients,  
employers and taxpayers



SOURCES: U.S. Renal Data System 2020 Annual Data Report, NIH Chronic Kidney Disease and Kidney Failure fact sheet