

# Kidney Chat: Ask a Social Worker

---

Kathy Merritt, LCSW

# Thanks to our speaker!

---



Kathy Merritt, LCSW

- Social work services manager for Satellite Healthcare
- Over 30 years of clinical experience working in the outpatient hemodialysis setting
- Former co-chair of the CNSW of Northern California

# The role of a social worker

---

# Role of a social worker

---

Please describe 5 ways a social worker can assist a kidney patient.



# Role of a social worker

---

Does a clinical social worker only become involved after a patient starts dialysis?



If so, why not before?

# Role of a social worker

---



If you do home dialysis, do you still get social worker services?



# Role of a social worker

---

Is it possible to have more than one social worker?



# Role of a social worker

---

If I don't find my social worker helpful, can I switch social workers?  
How?





# Role of a social worker

---



What is the role of the social worker with family and caregivers?

# Financial support for kidney disease

---

# Financial support

---

Do I qualify for Medicare because of ESRD?

Yes! Check out the following resources:

- [CMS – End-Stage Renal Disease](#)
- [CMS - Medicare Coverage of Kidney Dialysis & Kidney Transplant Services](#)

# Financial support

---

Do hospitals accept Medicare insurance?



# Financial support

---

What are some financial assistance programs that are specifically for kidney patients?





# Financial support

---

How can I get help with my copay?



# Financial support

---

Are there resources that provide kidney patients with academic and employment support, such as tuition assistance funds, work programs, etc.?

- Ticket to Work program through Social Security:  
<https://www.ssa.gov/work/>
- Each state has a Department of Rehabilitation/Vocational services

# **Emotional support for you or your loved one with kidney disease**

---

# Emotional support

---

Can dialysis and transplant be difficult on a marriage?

How can couples protect their marriage during this challenging time?

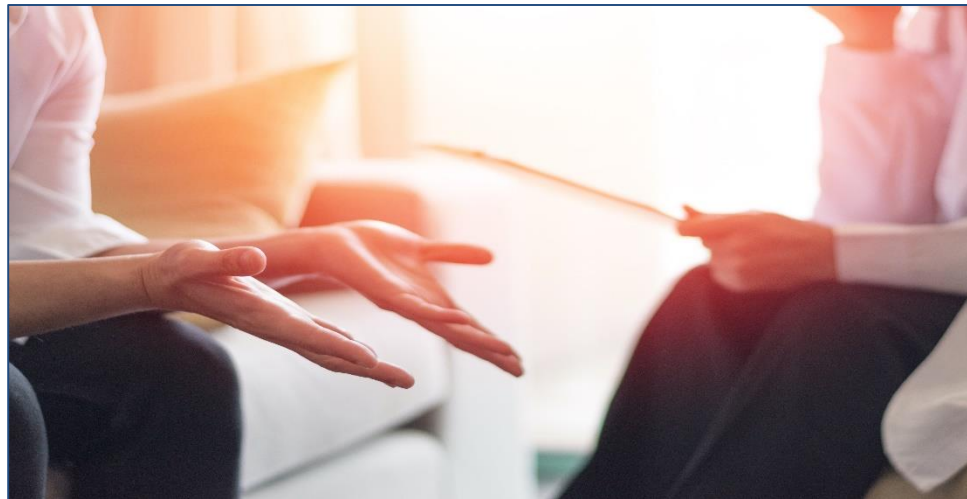


# Emotional support

---

I did not want to admit that I had kidney disease to myself or to others. Is that an expected reaction?

How can a social worker assist with these feelings?





# Emotional support

---



How can the renal care team and caregivers help patients with mental health issues who are not following their treatment plan or going to healthcare appointments?

# **Other resources for kidney disease patients and caregivers**

---

# Other resources

---

What resources are available for caregivers?

- National Alliance for Caregivers:  
<https://www.caregiving.org/resources/>

# Other resources

---

Where can I find out about assistance for funeral arrangements?



**Thank you!**



---

**Submit your live questions now!**

# Join us for our next webinar!

---



**Chrystal Okonta, MPH, CHES**

## **Food Safety and Kidney Disease**

**Friday, November 15, 2019 from 1:00 – 2:00 p.m. EST**

### **Join us to hear more about:**

- Four Steps to Food Safety
- How to safely prepare meals for groups
- Special considerations for kidney patients

Go to [www.KidneyFund.org/webinars](http://www.KidneyFund.org/webinars) to  
learn more and register!